

# FABRICS WORKHORSES

Hard-wearing, long-lasting, and great with any style: Sounds pretty appealing, doesn't it?

Produced by  
ORLI BEN-DO



**VENETO**  
So soft, you may want to pet your sofa. Alpaca, wool, acrylic, shown in Laguna. PHILIP GORRIVAN FOR HIGHLAND COURT: highlandcourtfabrics.com.



**KORFU**  
A geometric that will stay crisp and clean—it's stain-, odor-, and germ-resistant. Acrylic, shown in Cameo. CRYPTON: cryptonfabric.com.



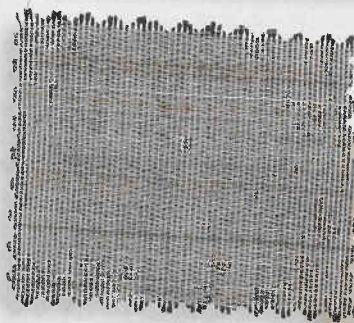
**POINTE**  
The tiny loops in this tightly woven *épinglé* look refined and tailored. Wool, shown in Platinum. J. ROBERT SCOTT: jrobertscott.com.



**STONEWEAVES**  
A sculptured velvet is a great choice if you want textural pattern *and* durability. Cotton, polyester, shown in Walnut. BARRY DIXON COLLECTION FOR VERVAIN: vervain.com.



**NIGEL**  
This velvet mohair may seem delicate, but it's made from rugged goat-hair fibers. Mohair, shown in Clay. RALPH LAUREN HOME: ralphlaurenhome.com.

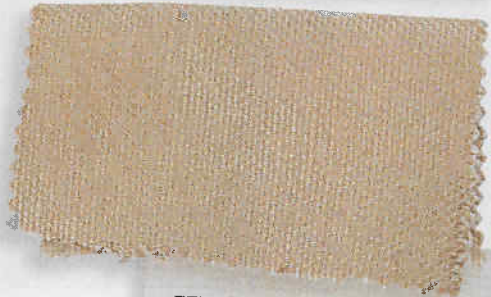


**PADDOCK**  
The original workhorse: it includes horsehair fibers. Cotton, horsehair, shown in Gris Souris. CRÉATIONS MÉTAPHORES: creations-metaphores.com.



**REESE**  
Built to withstand sun, snow, and anything you might spill. Solution-dyed acrylic, shown in Parchment. SUNBRELLA THROUGH SILVERSTATE FABRICS: silverstatefabrics.com.

**ULTRASUEDE GREEN**  
Ultrasuede has always been a go-to for high-traffic upholstery. Now it's eco-friendly, too. Recycled polyester, shown in Pool. KRAVET: kravet.com.



**FEUILLE**  
Rough luxe. It's woven with jute and finished with a golden sheen. Cotton, jute, shown in Beige & Gold Metallic. SCALAMANDRÉ: scalamandre.com.

**RIDGEVIEW**  
A chenille weft and bouclé warp create this wonderfully nuanced texture. Polyester, viscose rayon, cotton, shown in Camel. PINDLER & PINDLER: pindler.com.



**SHAKER**  
A special "wet spinning" process adds strength and softness to this linen. It will never pill or fray. Linen, shown in Bantu. ROGERS & GOFFIGON: 203-532-8068.

**WAVE HILL**  
Tough enough for commercial use, but so stylish you'll want it at home. Cotton, rayon, shown in Cricket. BRENTANO: brentanofabrics.com.

**SHERBORNE**  
This chenille has a looseness that's good for hugging the curves of a sofa, and it's so smooth! Polyester, shown in Leaf. JANE CHURCHILL THROUGH COWTAN & TOUT: cowtan.com.

# House Beautiful

## is small THE NEW BIG?

*The*  
**ONE-DAY  
BEDROOM  
MAKEOVER**  
*(dreamy!)*

390 SQ. FT.  
**ONE-BEDROOM**

1,400 SQ. FT.  
**COTTAGE**

650 SQ. FT.  
**GUESTHOUSE**

450 SQ. FT.  
**STUDIO**

1,200 SQ. FT.

**15**  
**GREAT  
TRICKS** *with*  
**MIRRORS**

\*\*\*\*\*SCH 5-DIGIT 55403  
80HBU/HR/20100701 \$16 P3  
LAURA CLEMENTI  
CARMICHAEL LYNCH SPONG  
110 N 5TH ST STE 1  
MINNEAPOLIS, MN 55403-1619

\$4.50



0 8>

0 75470 08458 4